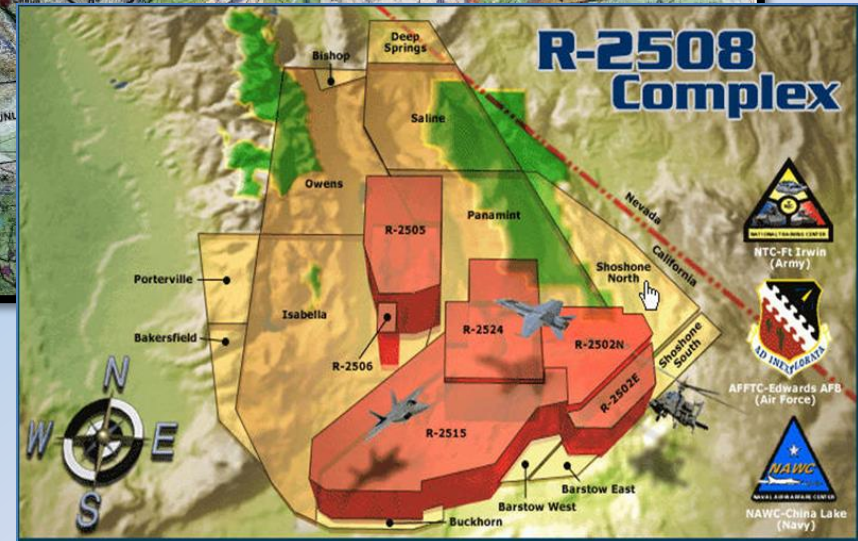
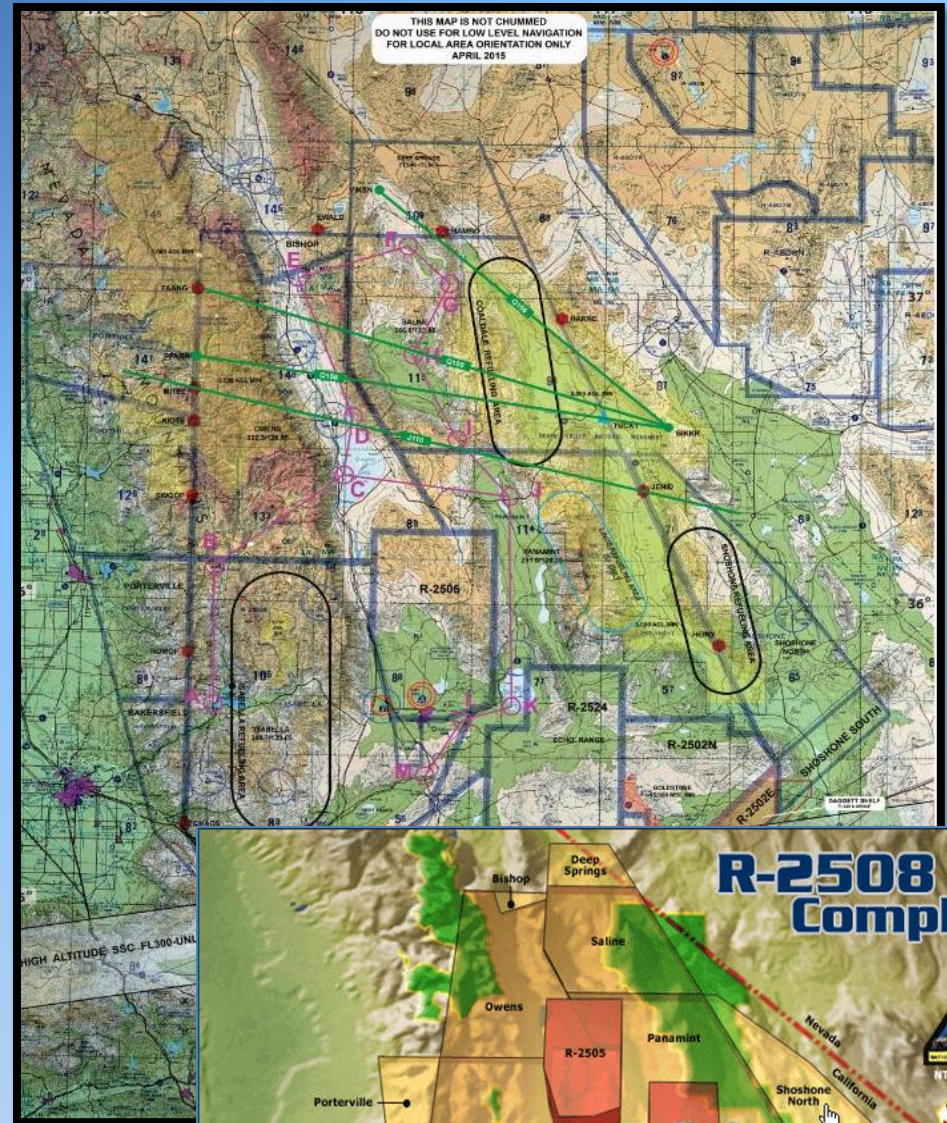




R-2508
Annual
User's Brief
09 SEPTEMBER 2021

WELCOME!

- Airspace Layout
- Concept of Operations
- Overflight Restrictions
- Low level Procedures
- Standard Op Procedures
- Special Activities/Areas
- Scheduling/Flt Plans
- SITREPS
- On Line Info





R-2508 Annual Users Brief

Restricted Areas:

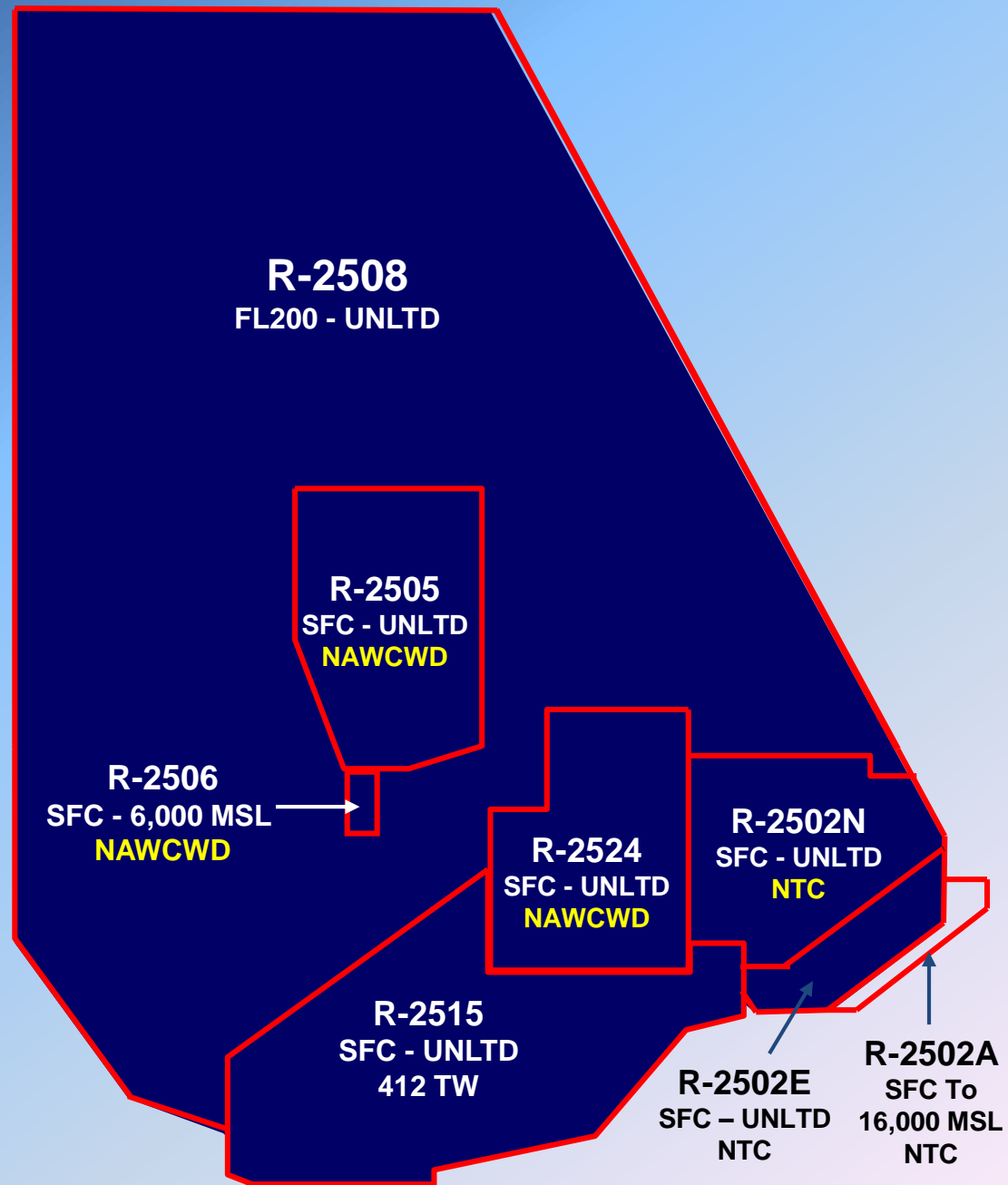
- Schedule R-2508 with CCF
- Schedule Internal Restricted Areas with Using Agency and CCF To Transit MOA/ATCAA Airspace

Using Agencies:

R-2505, R-2506, R-2524: NAWCWD

R-2515: 412TW

R-2502N, R2502E, R-2502A: NTC





R-2508 Annual Users Brief

MOA & ATCAA Airspace

Military Operations Areas & Air Traffic Control Assigned Airspace

JOSHUA APPROACH

Frequencies:

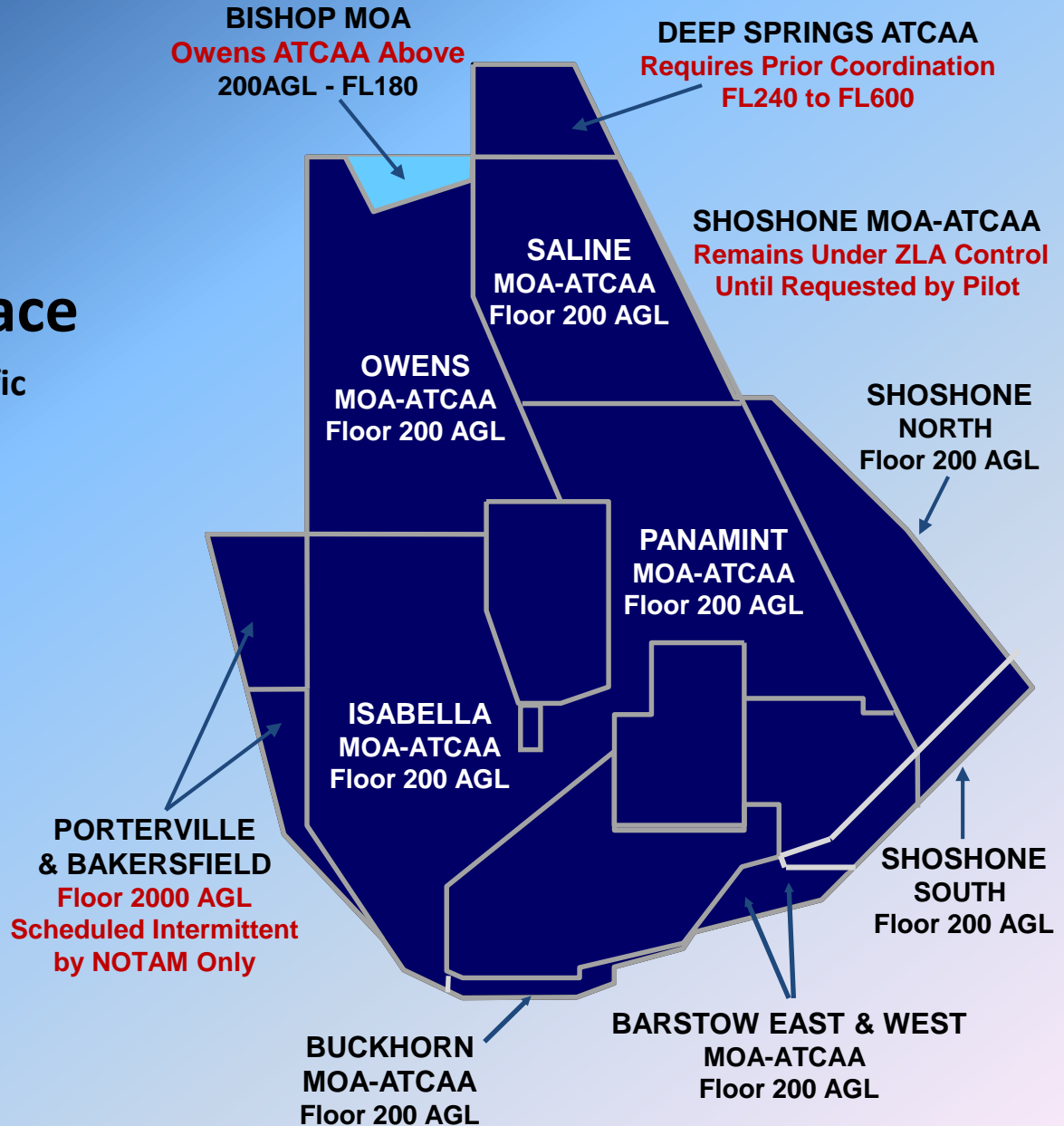
Joshua Primary ATC: 348.7/133.65

Isabella: 335.6/134.05

Owens: 322.3/126.55

Saline: 256.8/123.95

Panamint: 291.6/120.25





R-2508 Annual Users Brief

Concept of Operations

When the SUA is Activated

- VFR
- See and Avoid
- Non-Exclusive Use
 - Transponder – Mode C
 - Accept Advisory Service
 - Active vs. Inactive Monitoring





R-2508 Annual Users Brief

IFR Procedures

Not Authorized when SUA is Active

What to do if you encounter an
IMC Condition...

- Advise Joshua Approach
- Expect IFR Clearance
 - On Top or Vectors to VMC
 - IFR Separation applied
between IFR Aircraft only





R-2508 Annual Users Brief



R-2508 Air Traffic Control (ATC) and Military Radar Unit (MRU) Services

- **Joshua Control Facility, “Joshua Approach”**
 - Traffic & boundary advisories, mission support
 - VFR and IFR Services as applicable within MOAs, ATCAAs, R-2508, and Released Internal Restricted Areas
- **China Control & SPORT MRU’s**
 - Traffic & boundary calls and mission support services for China Lake (R-2505, R-2506 & R-2524)
 - Edwards (R-2515 Barstow & Buckhorn MOA/ATCAA)
- **Desert Radio, Airspace Information Center**
 - Mission support in R-2502N, R-2502E & R-2502A



R-2508 Annual Users Brief



Check in Procedures & Situational Awareness

- **Receive Clearance:** Contact Joshua Approach prior to Complex entry and exit. Initial contact shall include a request for a **Complex Clearance and Altitudes**.
- **Provide SA to ATC:** During check-in, pilots should state their intentions and planned work area using plain language.
- **Receive SA from ATC:** Joshua Approach should respond with **Work Area Clearance**, relevant **Traffic Information**, and, workload permitting, **work area saturation information**.
- **ATC traffic calls** are based on observed aircraft positions, headings, altitudes and radar limitations. **Rapid changes** in heading or altitude **may not be observed by ATC in time** for the information to be issued in a timely manner. **Aircrews** are encouraged to **Alert ATC** when conducting **rapid heading and/or altitude changes**.



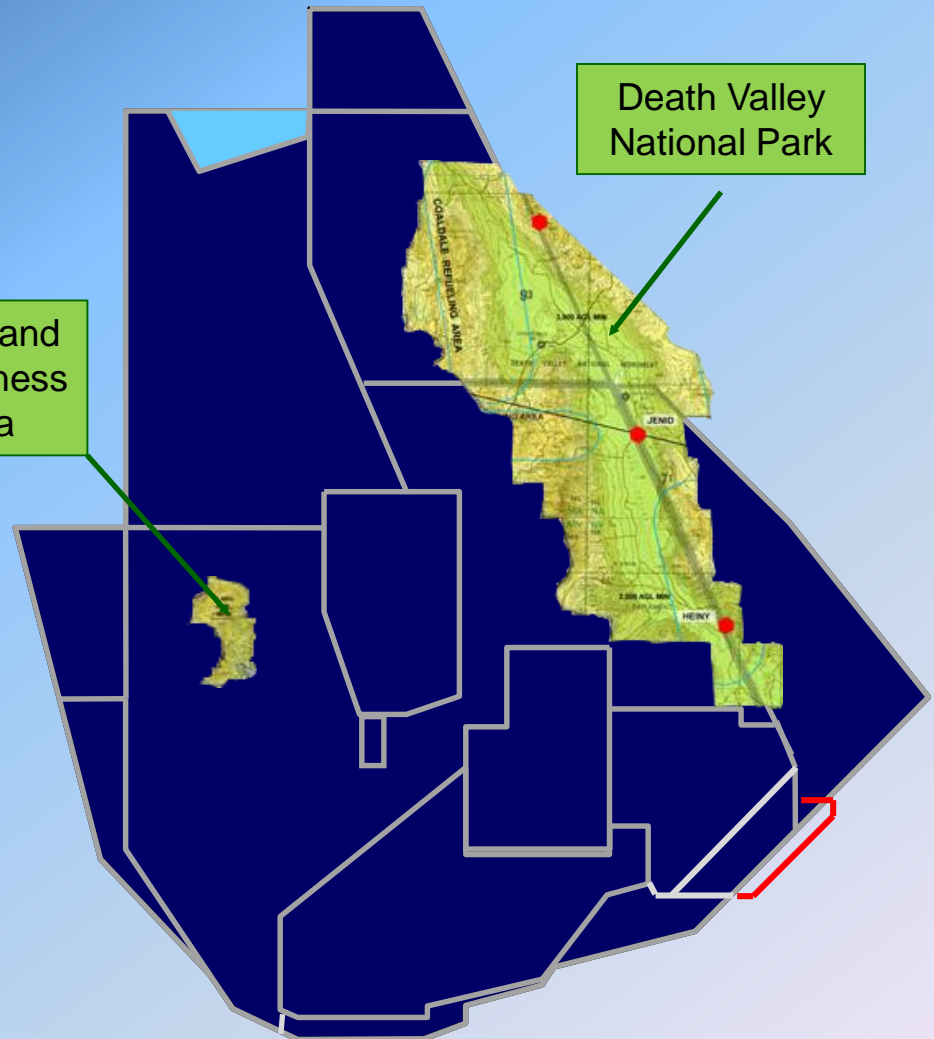


R-2508 Annual Users Brief

Overflight Restrictions of Death Valley National Park & Domeland Wilderness Area

Floor of MOA over Death Valley
National Park and Domeland
Wilderness Areas Published
Altitude: **3,000' AGL**

- FLIP AP1 California
- FAA JO 7400.8



Remain at least 3,000 feet both Laterally and Vertically from
Death Valley National Park and Domeland Wilderness
Area...3,000 feet from Canyon Walls and Saddles



R-2508 Annual Users Brief

Sequoia and Kings Canyon National Parks (SEKI)

- All participating aircrews maintain an altitude of **18,000'** or above over SEKI unless lower altitude is required.
 - If lower than **18,000'** is required Annotate “**SEKI**” in Remarks Section of R-2508 Complex Airspace request Form.
- Unscheduled operations below FL180 over SEKI are authorized only for safety of flight considerations.
- At no time will any participating aircraft descend below 3,000' AGL within the boundaries of SEKI except in an emergency situation. Lateral separation from SEKI is 3000'.





R-2508 Annual Users Brief

Overflight Restrictions

- Published Civil Airports:

- 1,500' AGL or 3 NM

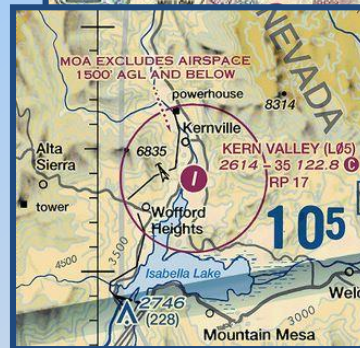
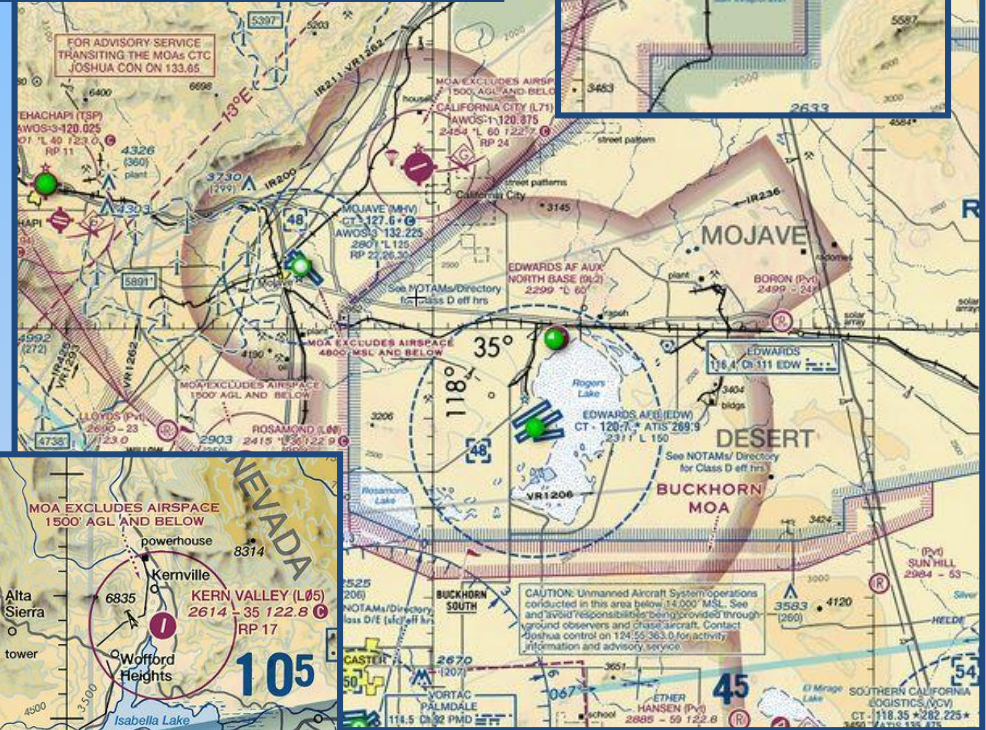
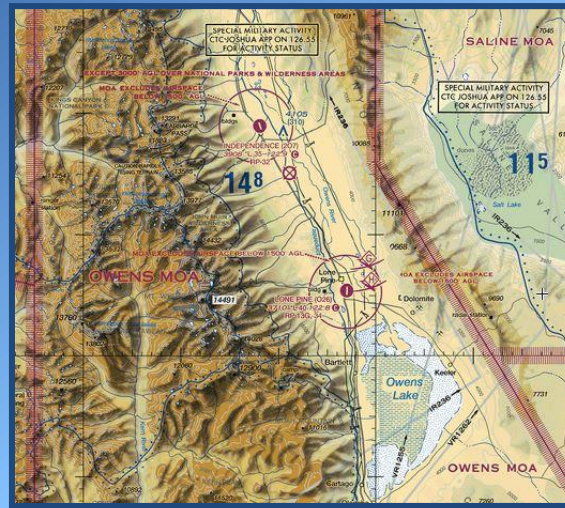
- Mojave Air & Space Port Class D

- Airspace:

- 4,800' MSL and below
- National Test Pilot's School
- Aircraft & Space Systems development/testing
- Airborne Tow operations

- Community Overflights:

- 3,000' AGL unless operating on an approved test plan





R-2508 Annual Users Brief

Low Level Procedures

For sustained flight below 1,500' AGL

- Requires notification/check-in with JOSHUA Approach
- Operating frequency - 315.9 MHz, NOT Monitored by ATC/MRU
 - Use as Unicom for blind transmissions, pilot to pilot only
- State Call sign, type aircraft, location and intentions
- Provides cross frequency communication capability with Land Management Agencies

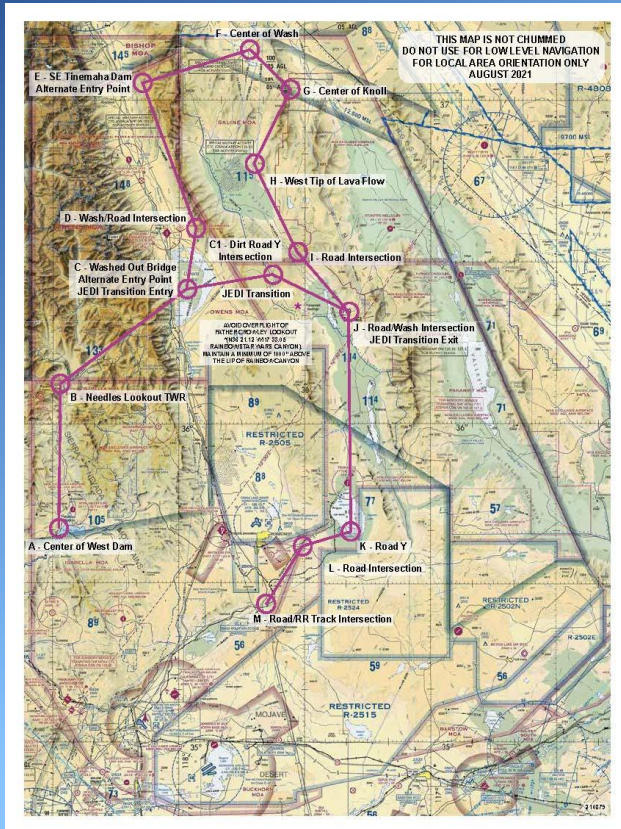




R-2508 Annual Users Brief

Sidewinder Low Level (SWLL)

- Flown in clockwise direction (i.e. A, B, C).
- Opposite direction flight **PROHIBITED**.
- AVOID noise sensitive areas by 3,000' AGL (i.e. Olancho, Cartago, Keeler, Lone Pine, etc.).
- AVOID all airports by 1,500' AGL or 3 NM.
- CAUTION: Possible merging traffic from aircraft on Jedi Transition. Offset east of J for de-confliction. Mandatory radio call approaching J: "Callsign, Sidewinder, approach Point Juliet."
- JEDI TRANSITION: C to C1 to J
 - AVOID overflying Father Crowley Lookout (N36 21.12 W117 33.05)
 - Maintain at or above 1,000' above lip of Rainbow Canyon.
- To schedule: annotate SIDEWINDER to remarks section of R-2508 Airspace Request Form.



Additional Information In R-2508 User's Handbook

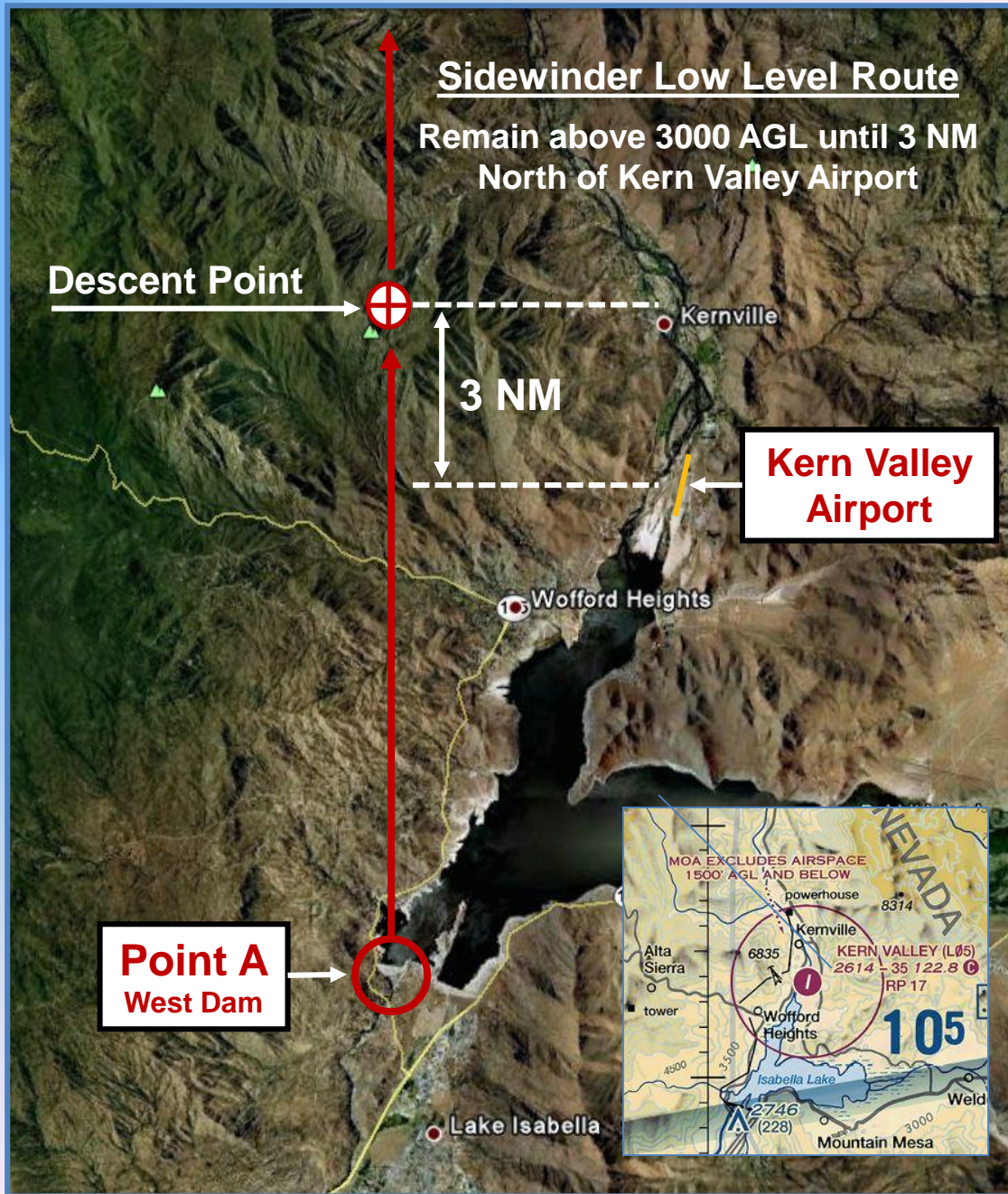


R-2508 Annual Users Brief

Noise & Low Level Complaints

Sidewinder Low Level Point Alpha to Descent Point

Remain above 3,000' AGL
until 3 NM North of Kern
Valley Airport to avoid
Lake Isabella and
surrounding Communities

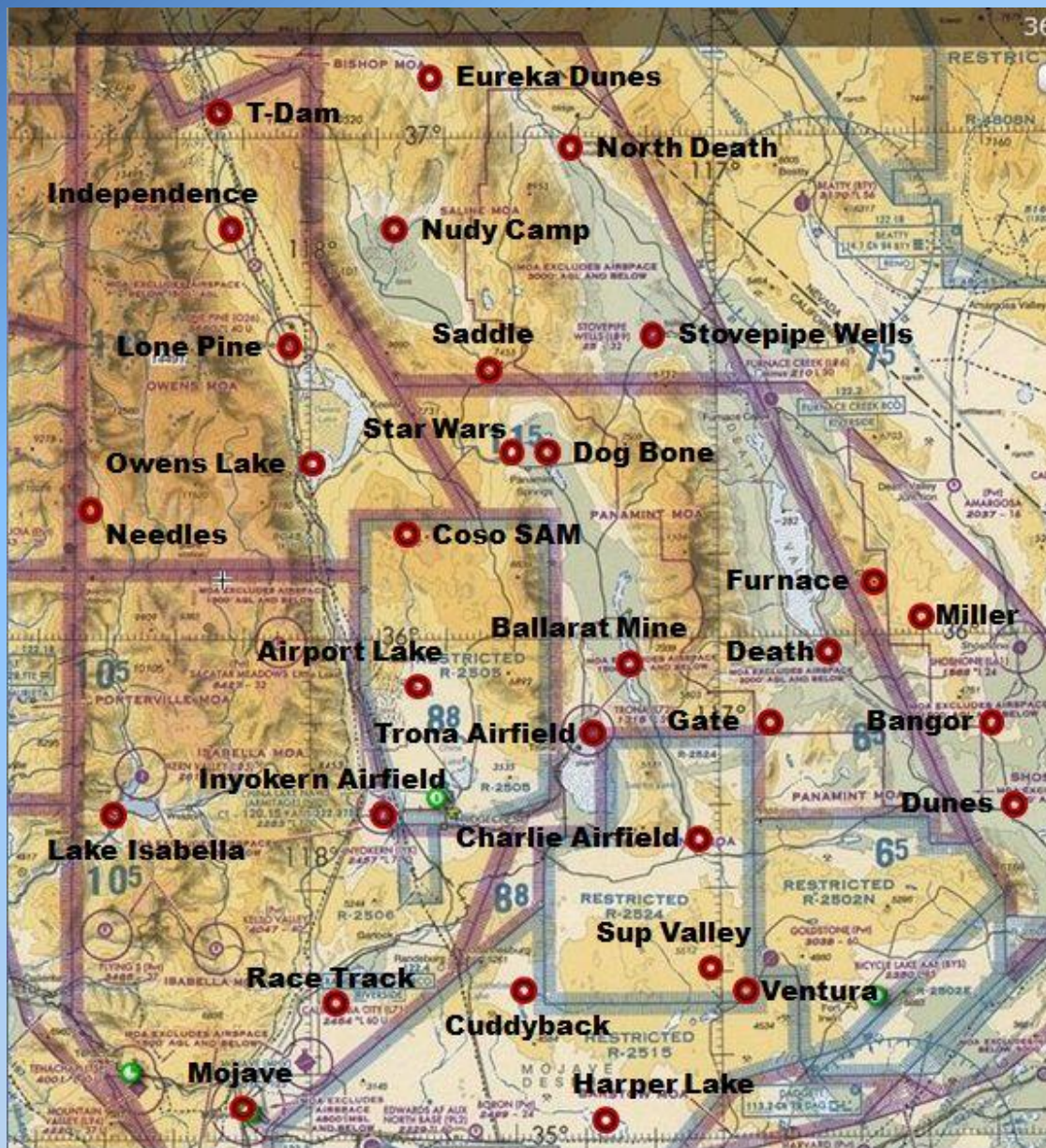




R-2508 Annual Users Brief

GEO Reference Points

- Easily identifiable ground reference points used to describe aircraft position during low level flight operations on frequency 315.9
- Detailed list of these locations, names and latitude/longitude position listed in R2508 Users Handbook paragraph 5.2.1





R-2508 Annual Users Brief

• Temporary Flight Restrictions (TFRs)

- Land Management Activity
- Fire-fighting Support ACFT

**SMOKE FROM FIRES STAY
AWAY!**

**Check NOTAMS Prior to Step
Check R-2508 Daily Brief Sheet**





R-2508 Annual Users Brief

NAS Lemoore/Fresno ANG

Ingress/Egress Routes

• NAS Lemoore

- Entry/Exit via KIOTE & SWOOP FL180 or above only
- Entry/Exit via ROMOF for Superior Valley at FL190/200 to avoid Isabella AR (ARISB)

• Fresno ANG

- Entry/Exit via FAANG & MITEL FL180 or above only
- Use FAANG to avoid Cap Points when active

• Other Uses

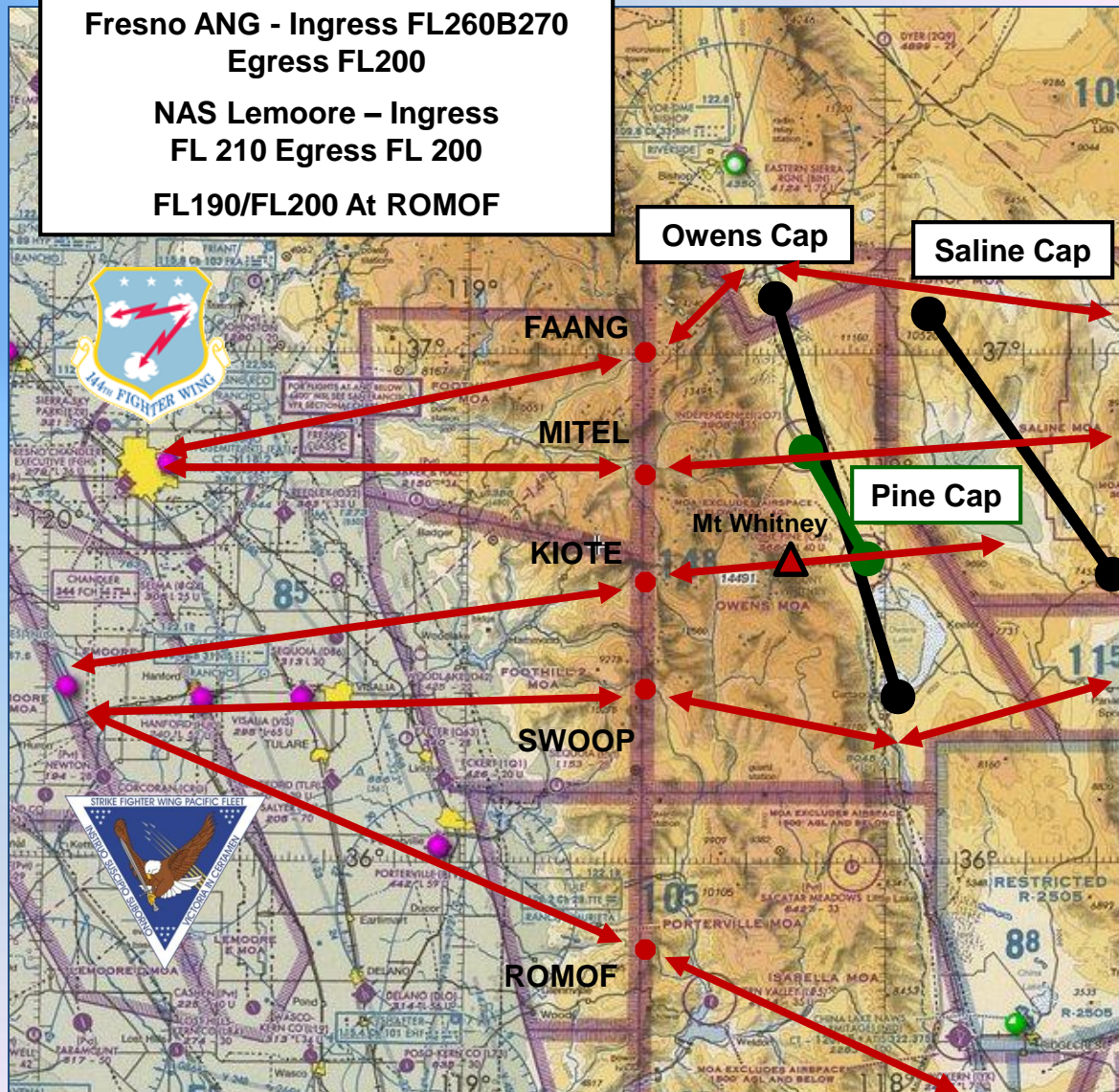
- Be aware of heavy East/West traffic flow across Owen Valley
- Avoid Mt Whitney area

Entry/Exit Point Altitudes

Fresno ANG - Ingress FL260B270
Egress FL200

NAS Lemoore – Ingress
FL 210 Egress FL 200

FL190/FL200 At ROMOF





R-2508
Annual
Users Brief

Large Force Exercises (LFE)

- LFEs are exercises involving more than 10 participating aircraft on target, working area, or as determined by CCF.
- **Common LFEs:** CVW, Orange Flag, etc.
- Published on the Daily Briefing Sheet at least 15 days in advance.
- LFE Planners:
 - Avoid peak Complex hours (1000-1400L).
 - Take advantage of CCF's knowledge and experience in coordinating LFEs.
 - CCF can provide recommendations to achieve mission success.
 - Early contact (recommended at least 30 days in advance) with CCF can prevent major last minute changes to exercise plans.

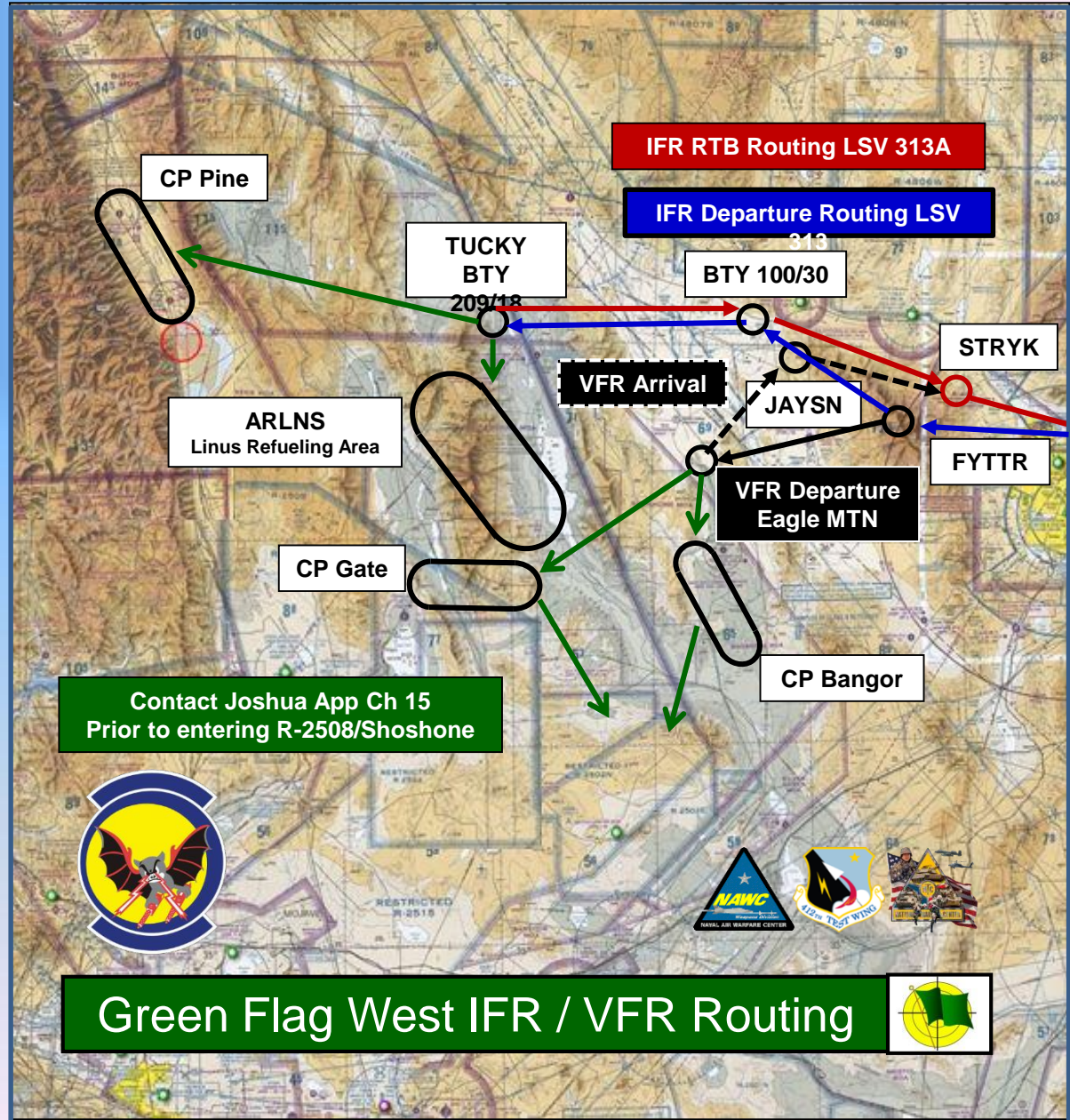




R-2508 Annual Users Brief

Green Flag West

- **IFR Departure Routing...** via FYTTR..BTY 100/30..TUCKY
 - **IFR RTB Routing...** via TUCKY..BTY 100/30...STRYK
-
- **LSV VFR Departure Routing** FYTTR..Eagle Mountain
 - **LSV VFR RTB Routing** Eagle Mountain..JAYSN..STRYK
-
- **Refueling Area LINUS (ARLNS) 22K'**
 - **Lone Pine CAS Orbit Hold** at 21K' then operate 20K' to 200 AGL in Owens MOA/ATCAA

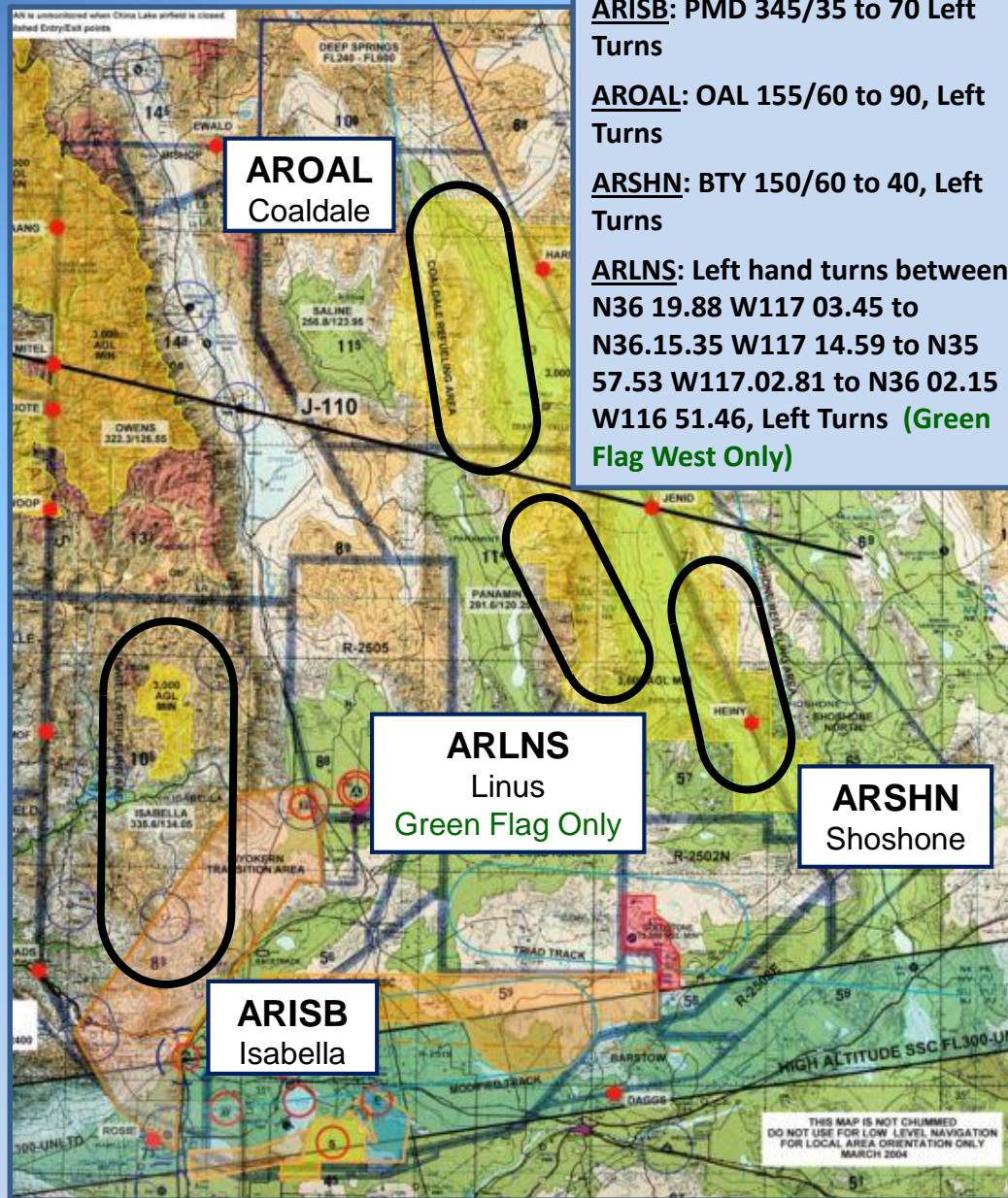




R-2508 Annual Users Brief

Air-Refueling Operations:

- Refueling areas **NOT exclusive-use airspace** and **NOT PROTECTED** from other Complex aircraft operating in the area.
- Avoid observed tanking operations by a minimum of **2,000 feet vertically** and **5 miles laterally**.
- Standard ARISB Alt Blocks:
FL210B230 / FL240B260 / FL270B290
- Tanker discrete squawks:
0051-0057 (assigned by SPORT)
5253-5257 (assigned by JOSHUA)
- 412 TW assigned/sponsored TNKRS:
Mode 1: Squawk 02
Mode 2: Squawk 7210



THIS MAP IS NOT CHUMMED
DO NOT USE FOR LOW LEVEL NAVIGATION
FOR LOCAL AREA ORIENTATION ONLY
MARCH 2004

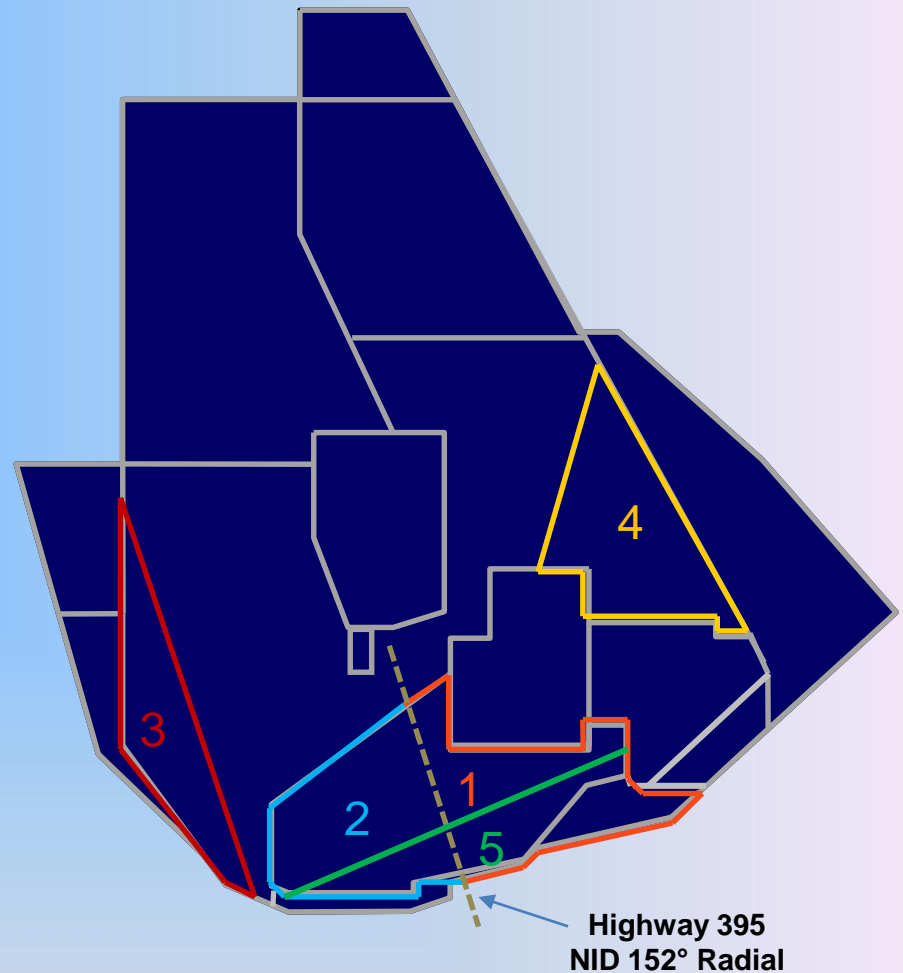


R-2508 Annual Tanker Brief

Special Activity Areas...

Weather Areas

- Area 1:** Eastern Half of R-2515 Divided by Highway 395
- Area 2:** Western Half of R-2515 Divided by Highway 395
- Area 3:** Isabella MOA/ATCAA West of the PMD 330° Radial
- Area 4:** Panamint MOA/ATCAA East of the BTY 182° Radial
- Area 5:** R-2515 South of the FIM 049° Radial & Barstow MOA/ATCAA



What Users Should know...

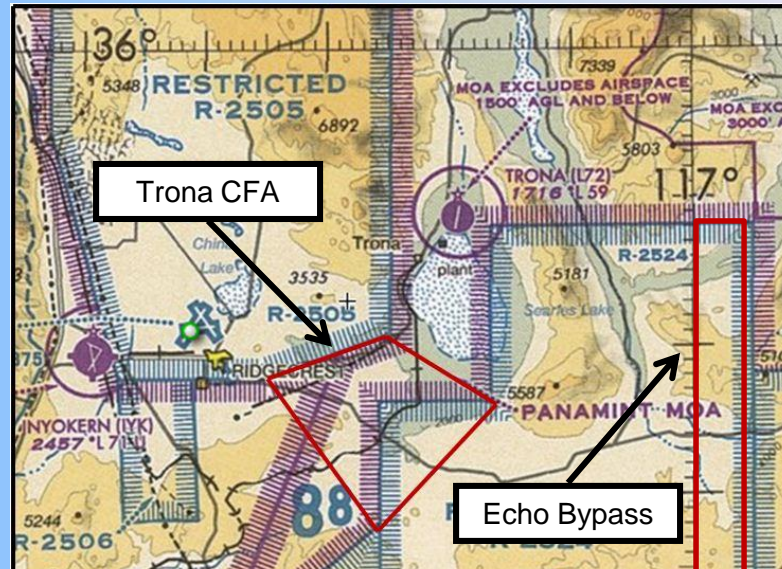
- WX Areas exist in the Southern Portion of the Complex
- WX Areas are Released to ZLA for Air Carrier WX Avoidance
- Joshua/SPORT will keep users updated on areas activated
- If you're unfamiliar with WX Area locations advise Joshua or SPORT and request assistance in WX Area avoidance.



R-2508 Annual Users Brief

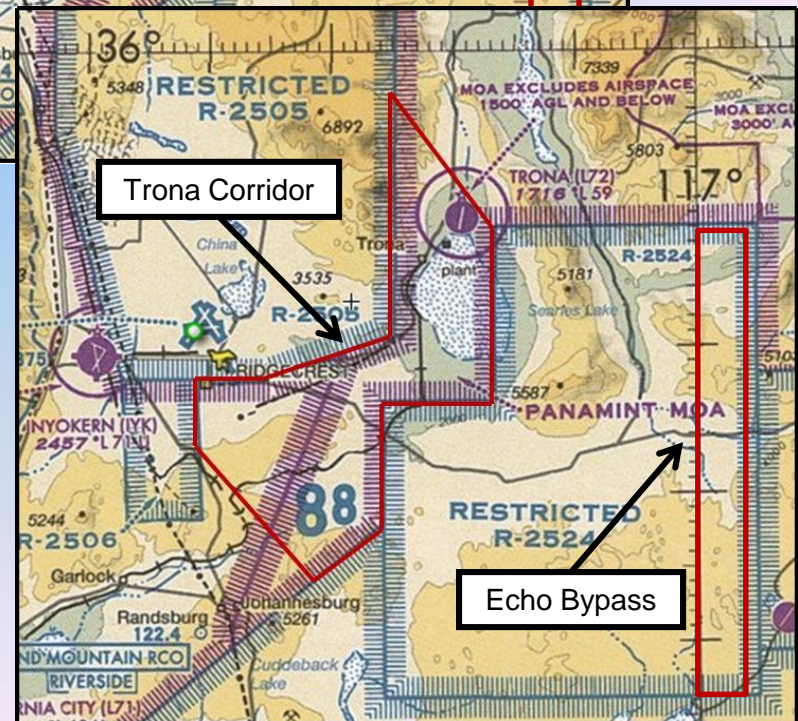
Special Activity Areas

- Trona Controlled Firing Area - CFA
- Altitudes: 3,000' AGL to 20,000 MSL
- Trona Corridor
- Altitudes: 20,000' MSL to Infinity
- Used to Protect Path of Free Flight Weapons Across Trona Gap
- May Be Used in Conjunction
- Echo Bypass may be available for transitions



Trona CFA

Echo Bypass



Trona Corridor

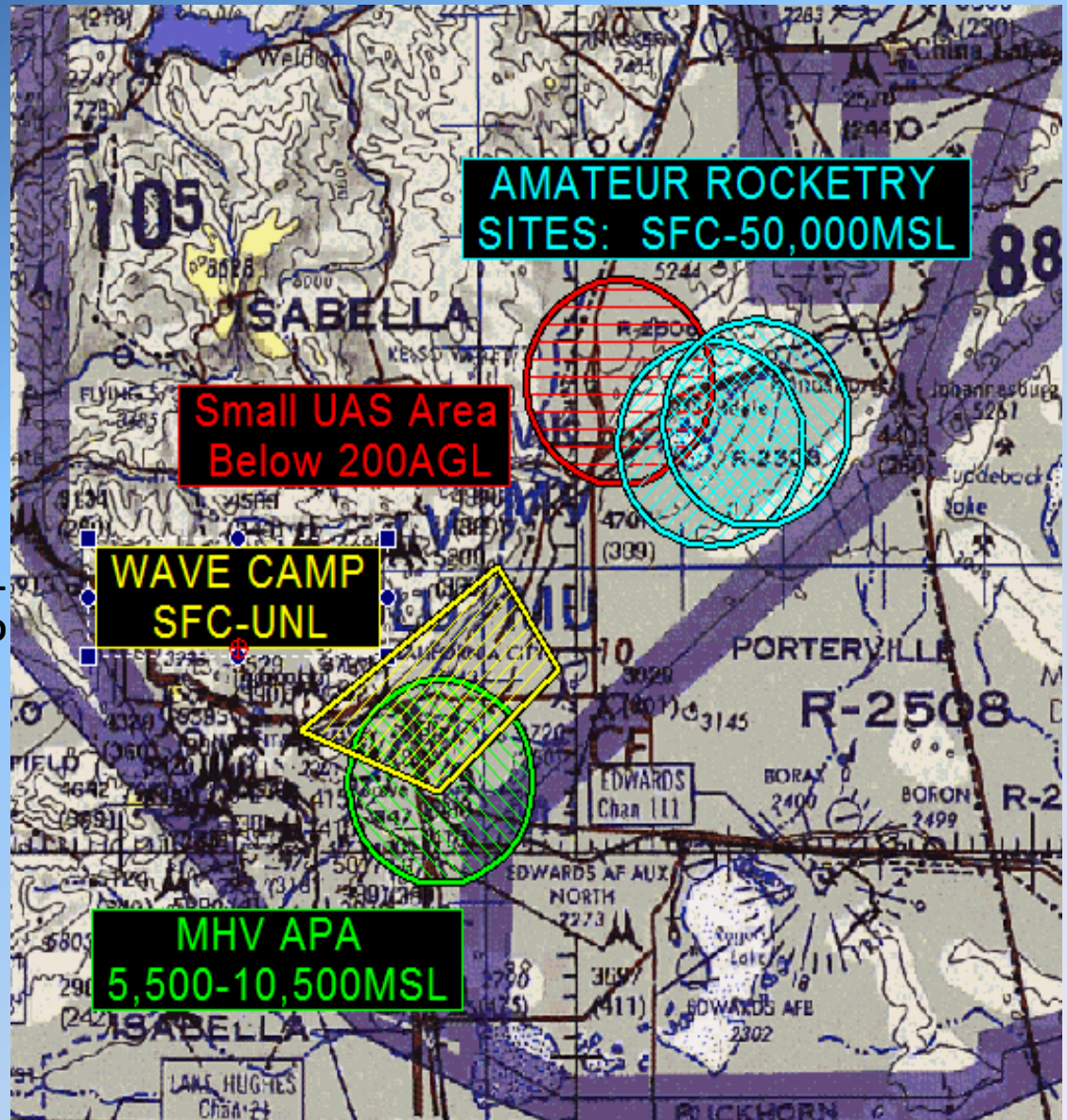
Echo Bypass



R-2508 Annual Users Brief

SPECIAL ACTIVITY AREAS

- **Small UAS Work Area**
 - Below 200' AGL
 - Underlies IR211 and VR1262
- **Koehn Dry Lake: Launch Site**
 - Launch Altitudes up to 50,000 MSL
 - sUAS 200AGL M-F / 400AGL WKND
- **Wave Camp Area: Concentrated Glider Activity - All altitudes**
 - Transponder Equipped above FL180
- **MHV Aerobatic Practice Area**
 - 5,500' to 10,500' MSL
 - W/I lateral confines MHV Class D
 - Activated real-time by JOSHUA

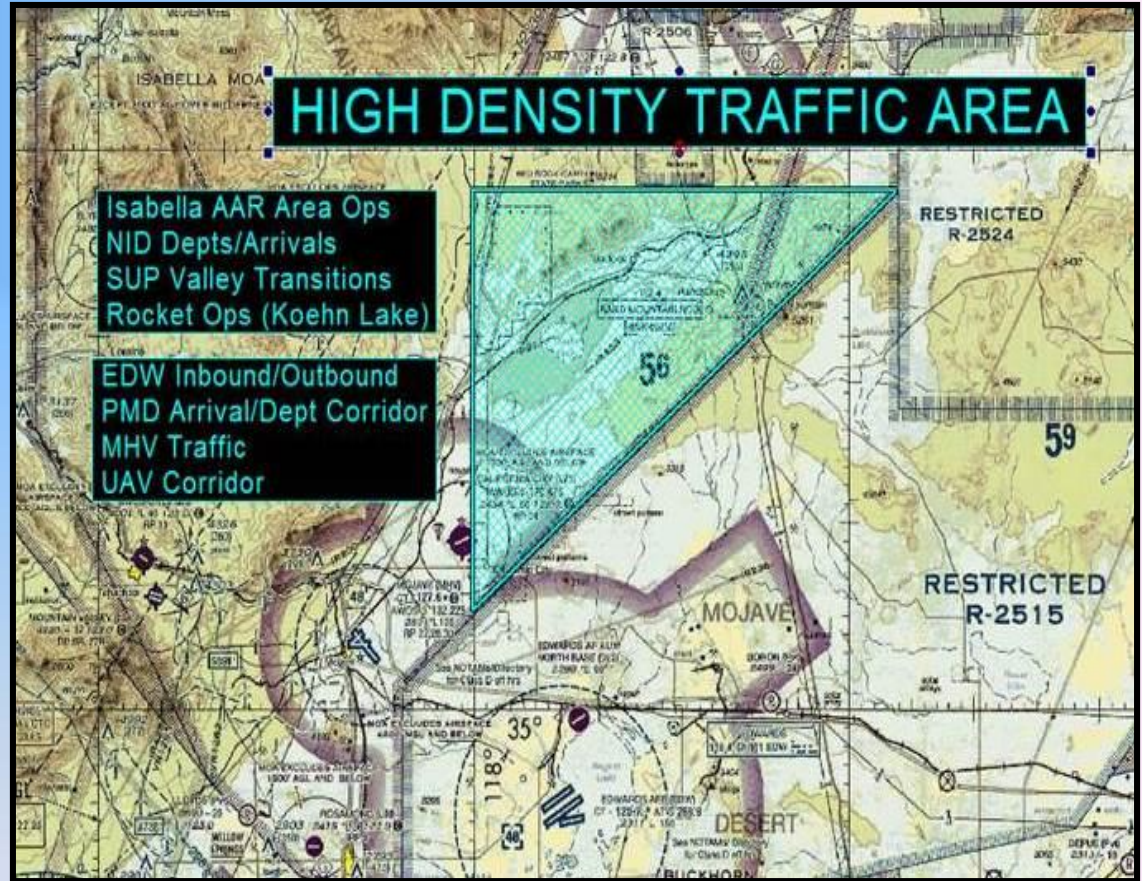




R-2508 Annual Users Brief

High Density Traffic Area

- Defined by: 118 line on west, extended southern boundary of R-2506 on north, boundary of R-2515 on southeast
- Confluence of large variety of activities, missions, platforms
- Majority of Incident Reports occur in this area
- Aircrews should expect numerous traffic calls and request updates as needed

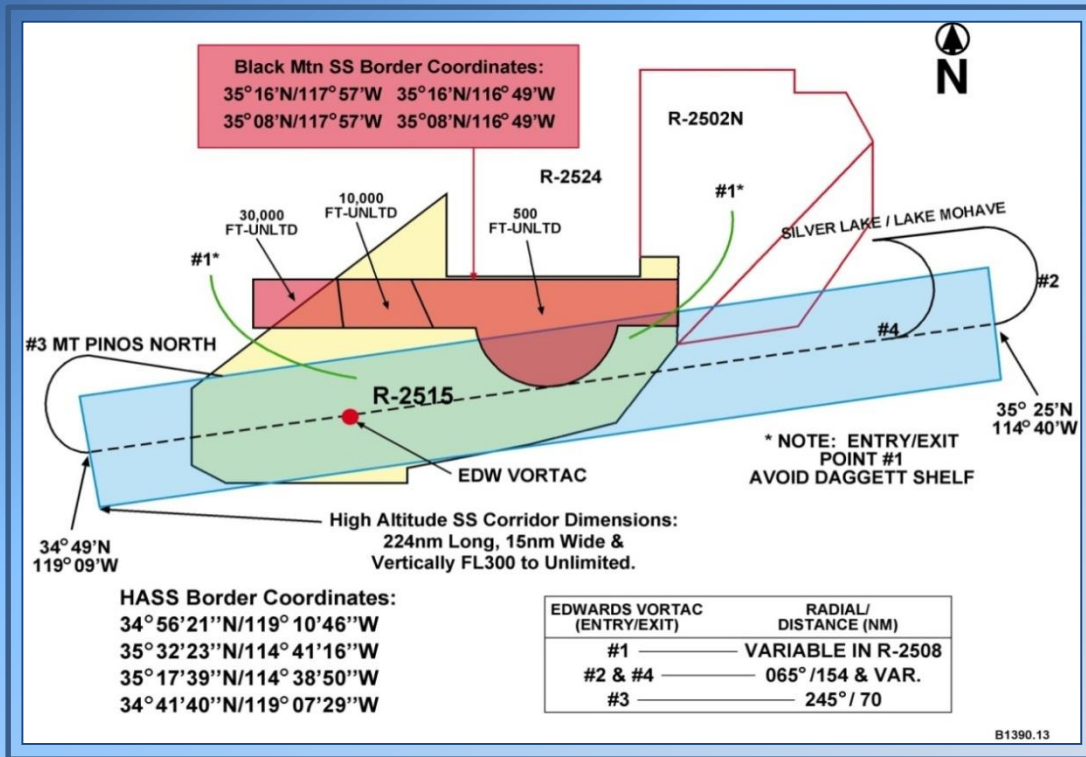




R-2508 Annual Users Brief

Special Activity Areas

- Supersonic Areas
- Black Mountain Supersonic
 - Tiered Bottom
 - SPORT must be open
- High Altitude Supersonic
 - At or Above FL300
 - Entry/Exit 1 within R-2515
 - Other Entry/Exit Point usage requires prior coordination with SPORT and LA Center



Supersonic operations

- Only in authorized supersonic areas
- Refer to R-2515 in-flight procedures (412TW 13-100) regarding use of High Altitude and Black Mountain areas, additional information available through the Edwards Airspace Management Office DSN 527-2515 or 277-2515
- Schedule Supersonic Operations with 412TW Center Scheduling. Same Day: DSN 527-3940 next day or beyond DSN 527-4110. Include in Remarks Section of CCF Airspace Request Form.

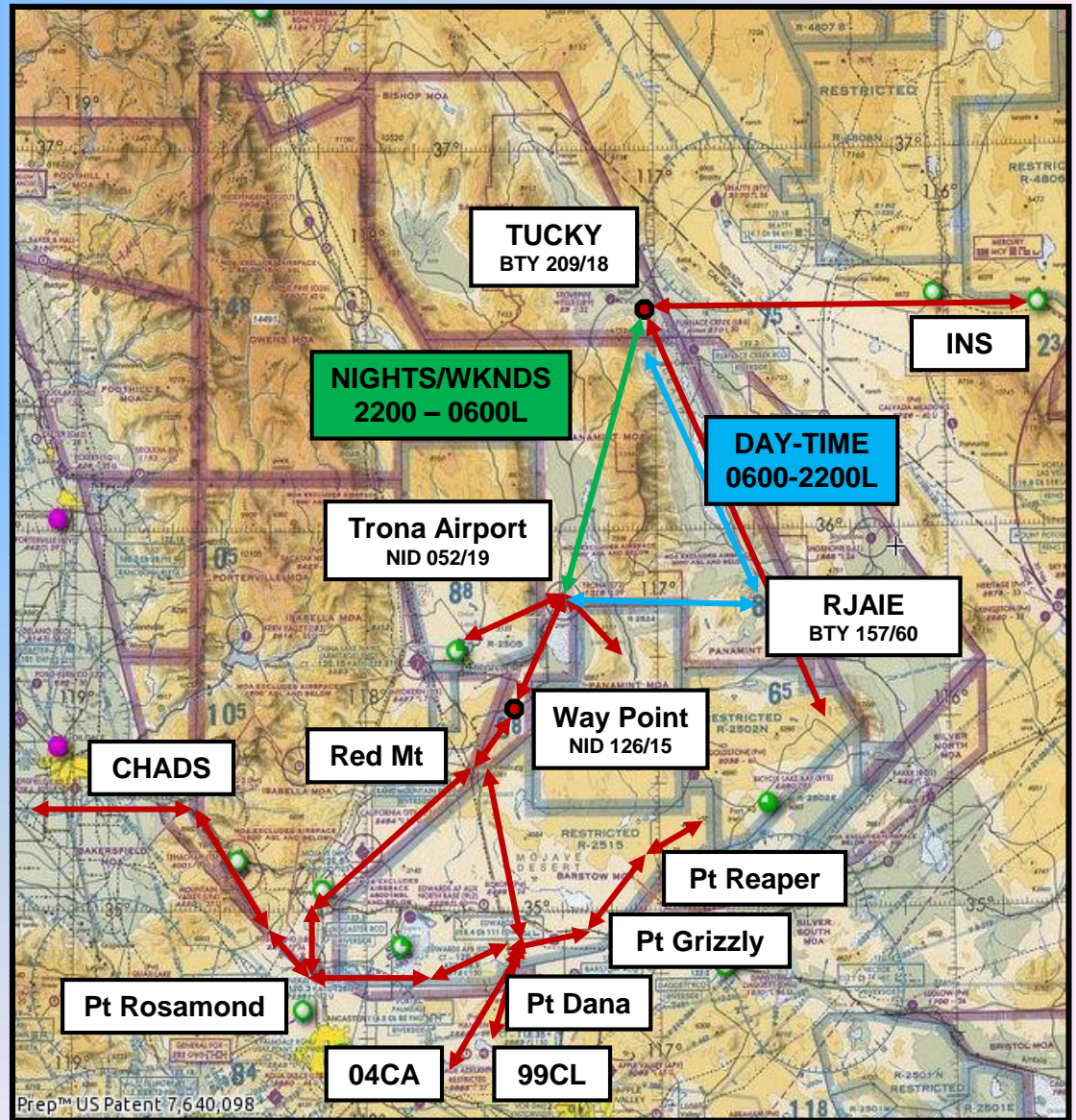




R-2508 Annual Tanker Brief

UAS/RPA Transition Routes

- All Transitions flown at FL190 or FL200 Correct Alt/Direction of Ft
- GREEN RTE: Authorized only after normal flying complete Mon-Fri, weekends, or FL400 and above.
- BLUE RTE: For use during normal Flt Ops Mon-Fri
- R-2505 – R-2524 Transitions:
 - Authorized directly across Trona Corridor (no loitering)
 - Min Alt: FL180
 - Mode 3 & ATC com required





R-2508 Annual Users Brief

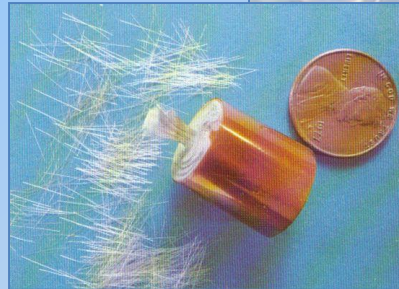
Chaff & Flares

Chaff/ECM

- Requires specific frequency management approvals (usually via unit)
- Notify CCF of Chaff/ECM activity when scheduling airspace (remarks section)
- Additional (internal) range rules may apply

Flares

- Internal restricted areas ONLY & requires specific Using Agency approval





R-2508 Annual Users Brief

Lights Out & Targets of Opportunity

Lights-Out Operations

- May be conducted within internal restricted areas
- Within R-2508 IAW Unit/CCB LOP

Do Not Select Targets of Opportunity

- Highlighting test aircraft may result in a security violation or interruption of an expensive test





R-2508 Annual Users Brief

R-2508 Complex Daily Brief Sheet

- What's going on the next day
- AAR Activity/UAS Transitions
- TFRs/LFEs/small UAS Activity
- Unusual/Special Operations
- Future Operations

R-2508 COMPLEX DAILY BRIEF SHEET
 DOES NOT INCLUDE ACTIVITIES SCHEDULED WITHIN
 INTERNAL RESTRICTED AREAS
 R-2508 Website: <http://www.af.mil/Newsroom/af.mil/Home/R-2508>
 USAF SharePoint: <https://USAF.DPS.MIL/TEAMS/12162>
 CCF After Hours Support: 1-866-905-2851

02 AUGUST 19

GPS TESTING EVENTS
 FAA Public Notice Website: http://www.faa.gov/SPANS/notices_public.aspx
 14 July - 02 August 2019, Nellis AFB, NV
 15 July - 20 August 2019, Yuma, AZ

SCHEDULED REFUELING OPERATIONS

DATE/TIME (Z)	AREA	ALTITUDES	UNIT BASE
021600Z - 021700Z	ARISB	FL240 - FL260	EDW

SPECIAL ACTIVITIES/OPERATIONS

SWLL RESTRICTIONS
 THE SWLL IS CLOSED FROM POINT "A" TO POINT "C" FOR FIRE FIGHTING ACTIVITIES. YOU MAY ENTER AT POINT "C" TO PROCEED NORTH ON THE SWLL.
 THE JEDI TRANSITION IS CLOSED FROM POINT "C" TO POINT "J". REMAIN CLEAR OF POINT "J" FOR HELO OPERATIONS.

NATIONAL PARKS/FORESTRY SERVICE ACTIVITIES
 CA-INF-1606 - CONCENTRATED ACTIVITIES - 301900Z - UFN
 The NPS/FS will be conducting concentrated activities within a 5 mile radius of N36° 11' 58" and W118° 16' 47". Altitude is at or below 3000 AGL.

NATIONAL PARKS/FORESTRY SERVICE ACTIVITIES
 CA-INF-1435 CONCENTRATED ACTIVITIES - 261500Z - UFN
 The NPS/FS will be conducting concentrated activities within a 7 NM radius of N36° 17' 06" and W118° 13' 45". Altitude is at or below 4,000 feet AGL.

** INDICATES CHANGES**
 For more detailed information concerning any of the above information, contact the R-2508 Central Coordinating Facility at DSN: 527-2508, COMM: (661) 277-2808.

** INDICATES CHANGES
 For more detailed information concerning any of the above information, contact the R-2508 Central Coordinating Facility at DSN: 527-2508, COMM: (661) 277-2508.

R-2508 Complex	ALTTI
050300Z - 050445Z	FL2
110130Z - 110315Z	FL
120130Z - 120315Z	F
130130Z - 130330Z	

CREECH TO 02N	ALTITUDE	RETURN	ALTITUDE	CALL SIGN
031730Z-031800Z	FL200	040200Z-040230Z	FL190	REAPER 1
031530Z-031600Z	FL200	040500Z-040530Z	FL190	GRIM 1
041730Z-041800Z	FL200	050200Z-050230Z	FL190	REAPER 1
041530Z-041600Z	FL200	050500Z-050530Z	FL190	GRIM 1
051730Z-051800Z	FL200	060300Z-060330Z	FL190	REAPER 1
051530Z-051600Z	FL200	060500Z-060530Z	FL190	GRIM 1

** INDICATES CHANGES
 For more detailed information concerning any of the above information, contact the R-2508 Central Coordinating Facility at DSN: 527-2508, COMM: (661) 277-2508.





R-2508 Annual Users Brief

IFR Flight Planning

- Flight Plans should be filed with 2 separate legs...
- Leg 1: Departure point, route of flight, R-2508 entry point, R-2508 as destination.
- Leg 2: R-2508, R-2508 exit point, flight route, destination airport/fix
- Do not file a delay in the Complex
- Filing a delay may result in the loss of the second half of your flight plan
- May result in extensive delay in receiving IFR Clearance out of area

DD Form 175, MAY 86

BASE OPERATIONS USE

TO USC 8012 and 8013: Plans in possible violation of Title 18, Chapter 22, Section 853, are prohibited in the field.

FLIGHT PLAN

U.S. DEPARTMENT OF TRANSPORTATION
FEDERAL AVIATION ADMINISTRATION

1. TYPE
VFR
IFR
D/VFR

2. AIRCRAFT IDENTIFICATION

3. AIRCRAFT TYPE/SPECIAL EQUIPMENT

4. TRUE AIRSPEED KTS

5. DEPARTURE POINT

6. DEPARTURE TIME PROPOSED (Z) ACTUAL (Z)

7. CRUISING ALTITUDE

8. ROUTE OF FLIGHT

9. DESTINATION (Name of airport and city)

10. EST. TIME ENROUTE HOURS MINUTES

11. REMARKS

12. FUEL ON BOARD HOURS MINUTES

13. ALTERNATE AIRPORT(S)

14. PILOT'S NAME, ADDRESS & TELEPHONE (OPTIONAL)

15. NUMBER ABOARD

17. DESTINATION CONTACT (TELEPHONE)

18. COLOR OF AIRCRAFT

CIVIL AIRCRAFT PILOTS: FAR Part 91 requires you file an IFR flight plan to operate under instrument flight rules in controlled airspace. Failure to file could result in a civil penalty not to exceed \$1,000 for each violation (Section 901 of the Federal Aviation Act of 1958, as amended). Filing of a VFR flight plan is recommended as a good operating practice. See also Part 99 for requirements concerning D/VFR flight plans.

FAA Form 7233-1 (6-21)
Electronic Version (Adobe)

CLOSE VFR FLIGHT PLAN WITH

FSS ON ARRIVAL

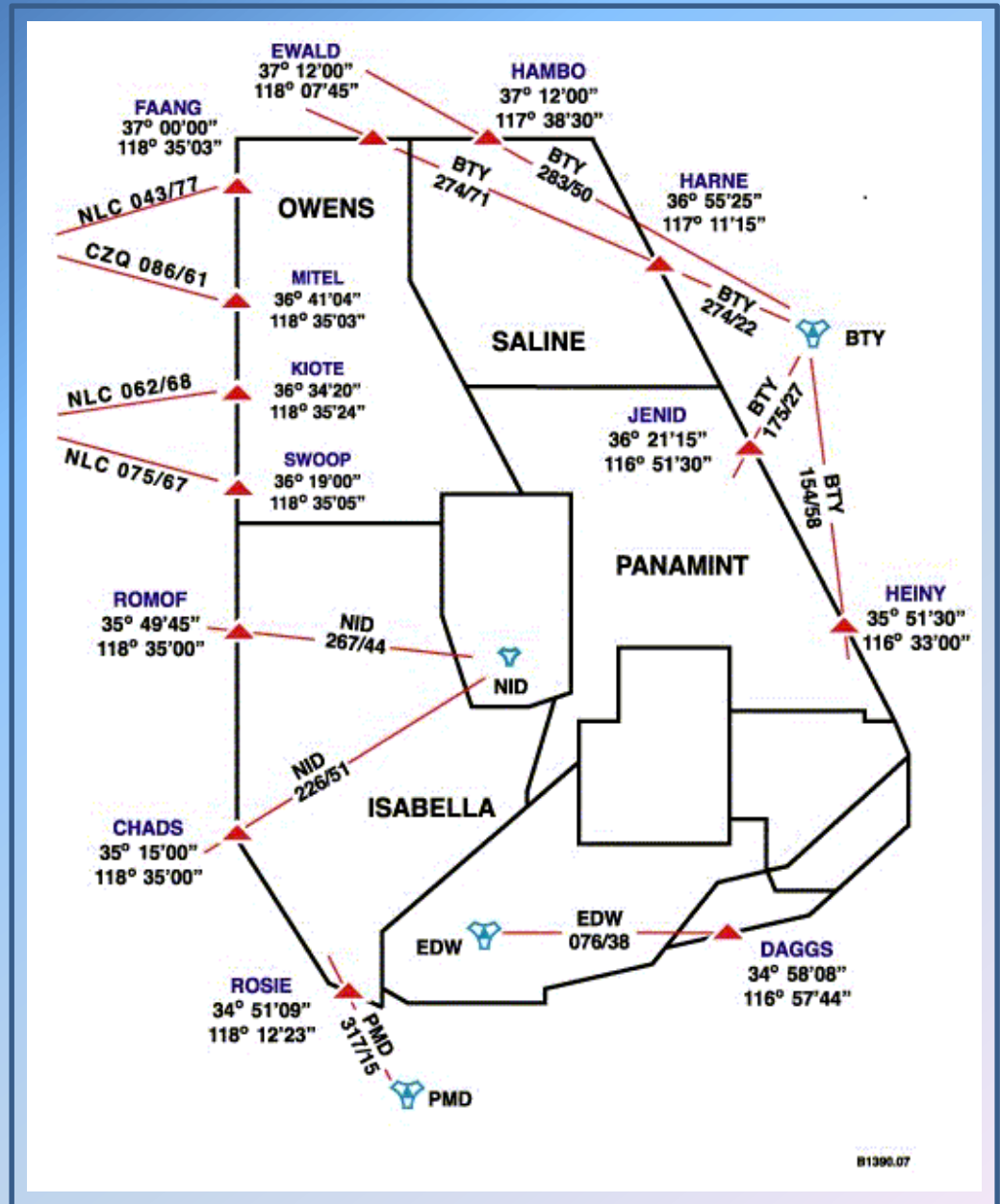




R-2508 Annual Users Brief

Entry/Exit Points Flight Plan Entries...

- Use Complex entry/exit points during flight planning to alert Joshua/Center of your intentions.
- FAANG/MITEL/KIOTE/SWOOP ROSIE/DAGGS can be filed by name (others by coords or RAD/DME)
- *NID TACAN is unmonitored when China Lake airfield is closed.



B1396.07





R-2508 Annual Users Brief

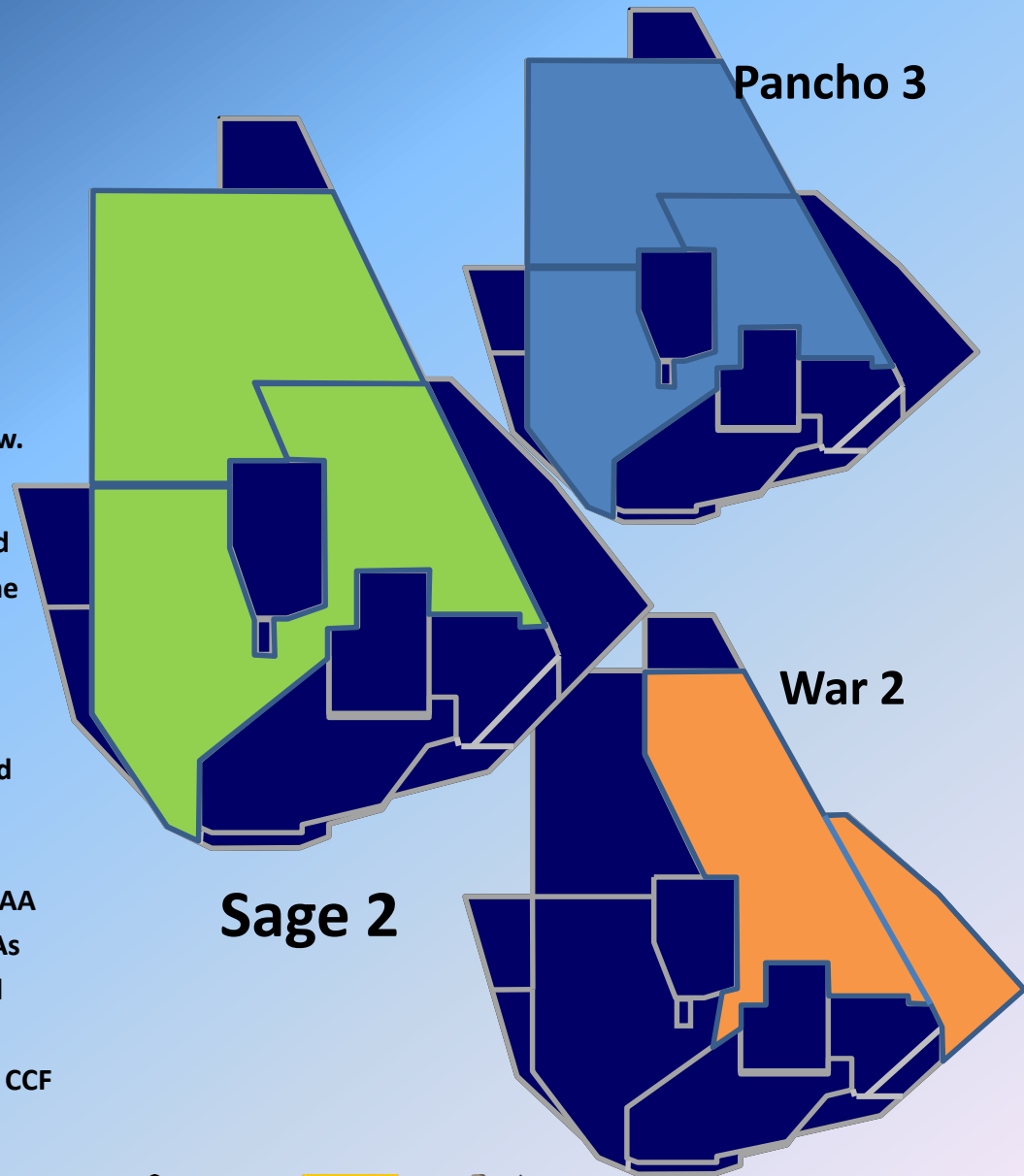
Complex Clearances

SAGE 2: Isabella, Owens, Saline, and Panamint, FL290 and below.

PANCHO 3: (EDW, NID, PMD, and NLC aircraft only.) Isabella and Panamint work areas at and below FL500, and Owens and Saline work areas at and below FL290.

WAR 2 Clearance: (Green Flag Participants Only) Saline and Panamint Work Areas at and below FL290, Shoshone MOA, and Shoshone North and South ATCAA's at and below FL230.

COLLINS 1 (U-2 A/C only): (not depicted) Isabella MOA and ATCAA 200' AGL to unlimited, and Owens, Panamint, and Saline ATCAAs above FL500. Additionally, if scheduled by the aircrew, internal restricted areas above FL500. ***NOTE*** Aircrew must schedule internal restricted areas IAW the scheduling agencies' policies. CCF and JCF are not responsible for knowing or advising if internal restricted areas are active and/or have been scheduled. This responsibility rests solely with the aircrew.





R-2508 Annual Users Brief

R-2508 Scheduling

CCF Office Hours - Monday thru Friday
0600-1800L, excluding Federal holidays

- Schedule NLT 1600L Day Prior
- Schedule NLT 1600L Friday for Weekend Operations
- After hours schedule changes: Call CCF After Hours Number 1-866-805-2851
- Include internal restricted areas scheduled with applicable Using Agency

R-2508 COMPLEX AIRSPACE REQUEST

DATE OF MISSION: 19 Apr 10

AGRO 11, BRAT 21, CUSTER 31, DWARF 41, MQJAVE 51, ACES11

SQUADRON: VFA-125
PHONE #: 540-4773
FAX #: 540-4773

R-2508 COMPLEX AIRSPACE REQUEST

DATE OF MISSION: 15 Apr 10

RAIDER 70, 71, 72, 73, 74, 75, 76, 77, 78, 79, 80, 81, 82, 83, 84, 85, 86, 87, 88, 89, 90, 91, 92, 93, 94, 95, 96, 97, 98, 99, 00

SQUADRON: VFA-125
PHONE #: 540-4773
FAX #: 540-4773

R-2508 COMPLEX AIRSPACE REQUEST

DATE OF MISSION: 15 Apr 10

SPERT-01, SPERT-02, SPERT-03, SPERT-04, SPERT-05, SPERT-06, SPERT-07, SPERT-08, SPERT-09, SPERT-10, SPERT-11, SPERT-12, SPERT-13, SPERT-14, SPERT-15, SPERT-16, SPERT-17, SPERT-18, SPERT-19, SPERT-20, SPERT-21, SPERT-22, SPERT-23, SPERT-24, SPERT-25, SPERT-26, SPERT-27, SPERT-28, SPERT-29, SPERT-30

SQUADRON: VFA-125
PHONE #: 540-4773
FAX #: 540-4773

Email: 2508CCF@edwards.af.mil

FAX Back to: CCF @ DSN 527-4798 or Comm: (661) 277-4798





R-2508 Annual Users Brief

Scheduling

Why CCF Needs your Airspace
Request Form NLT 1600L Day Prior
(Friday for Weekends)

Airspace Activation, Release and
Recall Information is sent to
Los Angeles Center to let the FAA
know what the military is
scheduled to use.

Off Station Users “Must be briefed
& schedule R-2508 through CCF”

Late scheduling could result in
Mission Loss or Delay

R-2508 DAILY ACTIVATION NOTIFICATION
16 April 2010

AREA	FROM	TO	OVERFLIGHT ALT	REMARKS
02E		0700	240	
		0700	300	
		0700	HOT	
		110	HOT	
		110	HOT	
			RLSD	
			NOT RLSD	
			RLSD	

R-2508 CENTRAL COORDINATING FACILITY
EDWARDS AIR FORCE BASE, CALIFORNIA
AIRSPACE “RELEASE AND RECALL”
After Hours Phone Number: 1-866-805-2851

Page 2 of 2

II. (Contd.) MDA/ATCAA Release and Recall

AREA	ACTIVATED FROM	ACTIVATED TO	AT/OR BELOW ALT	REMARKS
Panamint	090100	090200	300	
	090200	090500	400	
	090500	090515	290	
	090515	090530	130	
	090530	090600	300	
Saline	090100	090200	400	
	090200	090515	300	
	090515	090530	130	
Shoshone MDA	090200	090500	300	
Shoshone North ATCAA	090200	090500	290	

R-2508 CENTRAL COORDINATING FACILITY
EDWARDS AIR FORCE BASE, CALIFORNIA
AIRSPACE “RELEASE AND RECALL”
After Hours Phone Number: 1-866-805-2851

Page 1 of 2

I. Restricted Area Release and Recall for period starting 090100Z April 2010

AREA	RELEASED FROM	RELEASED TO	AT/OR ABOVE ALT	REMARKS
R-2502E	090100	091300	240	
R-2502N	090100	091300	240	
R-2502A	090100	091300	290	
R-2505	090100	091300	RLSD	
ITX SHELF	090100	091300	110	
R-2506	090100	091300	RLSD	
R-2508	090100	091300	RLSD	
R-2515	090100	091300	RLSD	
R-2524	090401	090400	HOT	
	090615	090614	HOT	
	090701	090700	060	
	090100	091300	HOT	
	090100	091300	060	
	090100	091300	050	

II. MDA/ATCAA Release and Recall

AREA	ACTIVATED FROM	ACTIVATED TO	AT/OR BELOW ALT	REMARKS
Barstow East ATCAA	090100	090515	230	
Barstow MDA	090100	090515	180	
Barstow West ATCAA	090100	090515	300	
Bishop MDA	090100	090200	180	
Buckhorn MDA/ATCAA	090100	090530	180	
Isabella	090500	090500	300	
	090100	090530	100	
	090330	090330	420	
	090500	090500	400	
	090515	090515	300	
	090530	090530	290	
	090100	090600	130	
	090330	090330	420	
	090500	090500	300	
	090515	090515	400	
	090530	090530	300	
	090600	090600	290	
	090100	090600	130	

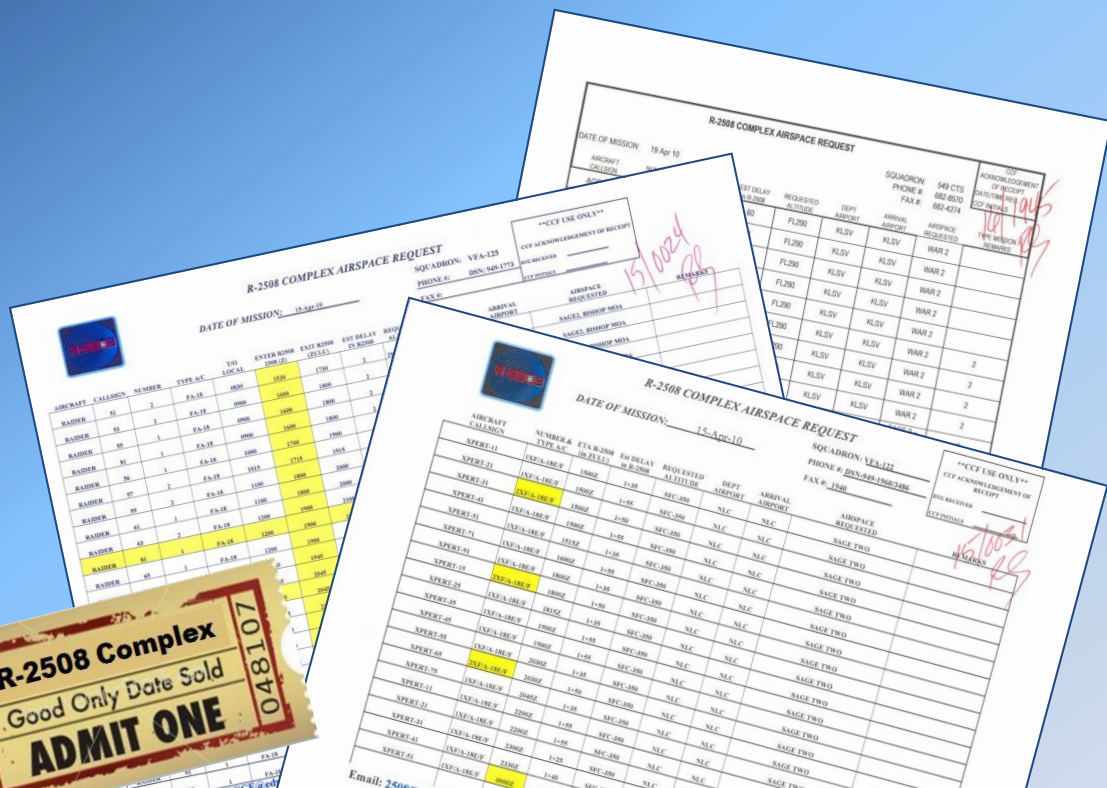




R-2508 Annual Users Brief

Scheduling

- Scheduling data used to Generate ATC Flight Plan Information and Flight Progress Strip for Joshua
- Flight Strip is Your Ticket for entry into the Complex
- Use R-2508 Complex Airspace Request Form and Submit via Email (no fax please)
- Units will receive return acknowledgement
- Changes to received schedules MUST be called in, emailed to CCF



AGR011		2145	S, T, SHN, Ø2N, Ø2E, SHS,	29Ø		
F16	LSV		SH			
1F3Ø3824633891						

RADER51		153Ø	I, O, S, T, BI	29Ø		
F18	NLC					
1F3Ø3456633851						

XPERT11		15ØØ	I, O, S, T	35Ø		
F18	NLC					
1F3Ø3486633852						





R-2508 Annual Users Brief

SITREP

(R-2508 Situation Report)

- Official Communication
- Official Response
- Don't wait too long...

2010-04-12 15:25 6612774798 P 2/2

R-2508 SITUATION REPORT

FROM: (OPTIONAL) LHO1 MDRK
452 AMW/SEF
DSN: 447-4481

TO: R-2508 Central Coordinating Facility
100 E. Sparks Dr.
Edwards AFB CA 93524-8090

DATE RECEIVED: 4-12-2010
DATE OF REPORT: 4-12-2010

DSN: 527-2508 FAX: 527-4798

This form may be used by aircrews or controllers to submit any constructive information to improve the safety and efficiency of aviation operations in the R-2508 Complex. Identification of the drafter is optional. This form is intended for the reporting of circumstances/services that enhance or degrade the user's mission within the R-2508 Complex. This form will not be used to replace reports of situations that require submission of Hazardous Air Traffic Reports (HATR), Operational Air Hazard Reports (OHR), or Near Mid-Air Collision (NMAC) Reports. Request this report be submitted within 5 days of the incident to ensure availability of required data necessary to support analysis of the reported situation.

The information contained in this form is for military OFFICIAL USE ONLY and will be used for the exclusive purpose of improving air operations within the R-2508 Complex. No punitive or disciplinary action will be taken as a result of statements made on this form.

DATE/TIME SITUATION OCCURRED: MARCH 31, 2010
LOCATION SITUATION OCCURRED: 140L

TYPE AIRCRAFT: C-17
OTHER AIRCRAFT INVOLVED: BEARING

CALL SIGN: SLAM
OTHER AIRCRAFT INVOLVED: MOONEN

FREQUENCY: 124
OTHER CALL SIGN: MOON

ALTITUDE:
CONTROLLING AGENCY:

NARRATIVE: (Be as complete as possible. Include recommendations to prevent recurrence. Add additional sheets as necessary.)

R-2508 SITUATION REPORT

FROM: (OPTIONAL) Frontline Manager Joshua Approach

TO: R-2508 Central Coordinating Facility
100 E. Sparks Dr.
Edwards AFB CA 93524-8090

DATE RECEIVED: 08/19/09
DATE OF REPORT: 08/19/09

DSN: 527-2508 FAX: 527-4798

This form may be used by aircrews or controllers to submit any constructive information to improve the safety and efficiency of aviation operations in the R-2508 Complex. Identification of the drafter is optional. This form is intended for the reporting of circumstances/services that enhance or degrade the user's mission within the R-2508 Complex. This form will not be used to replace reports of situations that require submission of Hazardous Air Traffic Reports (HATR), Operational Air Hazard Reports (OHR), or Near Mid-Air Collision (NMAC) Reports. Request this report be submitted within 5 days of the incident to ensure availability of data required to support analysis of the reported situation.

The information contained in this form is for military OFFICIAL USE ONLY and will be used for the exclusive purpose of improving air operations within the R-2508 Complex. No punitive or disciplinary action will be taken as a result of statements made on this form.

DATE/TIME SITUATION OCCURRED: 08/19/09 14:49Z
LOCATION SITUATION OCCURRED: IYK / Panamint

TYPE AIRCRAFT:
OTHER AIRCRAFT INVOLVED: COSO31 F18

CALL SIGN:
OTHER AIRCRAFT INVOLVED: SIGN (S) IF KNOWN:

FREQUENCY:
AGENCY: Joshua Approach

ALTITUDE:
AGENCY: Joshua Approach

NARRATIVE: (Be as complete as possible. Include recommendations to prevent recurrence. Add additional sheets as necessary.)
Joshua Approach that he was working with CROOK47 was a participant and range briefing (ASC Ranges) and that then proceeded to Panamint and joined numerous aircraft. China Lake is bending the rules. This is not fair to the players to understand the rules. And is not safe. And is not knowing what other aircraft are doing. unsafe.

Return by Fax: 661-277-4798, DSN 527-4798 or E-mail: 2508ccf@edwards.af.mil





R-2508 Annual Users Brief

What's Available

Online...

- R-2508 Daily Flying Schedule posted online Monday Thru Friday at 0700L
- Includes Work Areas and Mission Profiles as provided on R-2508 Airspace Request Form
- Access requires .mil email address and CAC log on



<input type="checkbox"/>	Select	Type	Name	Modified	Modified By
<input type="checkbox"/>		Folder	R-2508 24 Hour Schedule	5/23/2013 21:23	Blankenship, Andrew D CTR USAF AMC AMC/AFLCMC ESC HIB ADM
<input type="checkbox"/>		Folder	R-2508 Daily Brief Sheet	5/23/2013 21:23	Blankenship, Andrew D CTR USAF AMC AMC/AFLCMC ESC HIB ADM
<input type="checkbox"/>		Folder	R-2508 Documents	5/23/2013 21:23	Blankenship, Andrew D CTR USAF AMC AMC/AFLCMC ESC HIB ADM
<input type="checkbox"/>		Folder	R-2515 Documents	7/2/2013 11:05	SANDERS, MARVIN D CIV USAF AFMC 412 OSS/OSCC
<input type="checkbox"/>		Folder	Sidewinder Low Level Route	5/23/2013 21:23	Blankenship, Andrew D CTR USAF AMC AMC/AFLCMC ESC HIB ADM
<input type="checkbox"/>		File	SAMPLE dd2875	8/13/2013 11:00	SANDERS, MARVIN D CIV USAF AFMC 412 OSS/OSCC

AFNET EIS SharePoint Account for CCF Online Information - 24 Hour Schedule & Daily Brief Sheet:

<https://USAF.DPS.MIL/TEAMS/12162>

- Non-USAF agencies must setup an AFNET EIS Sharepoint Account.**
- Contact the 412th OSS IAO at DSN: 525-4269 or COMM: (661) 525-4269.
 - Requirements: A current Information Awareness training certificate
 - Complete DD Form 2875.

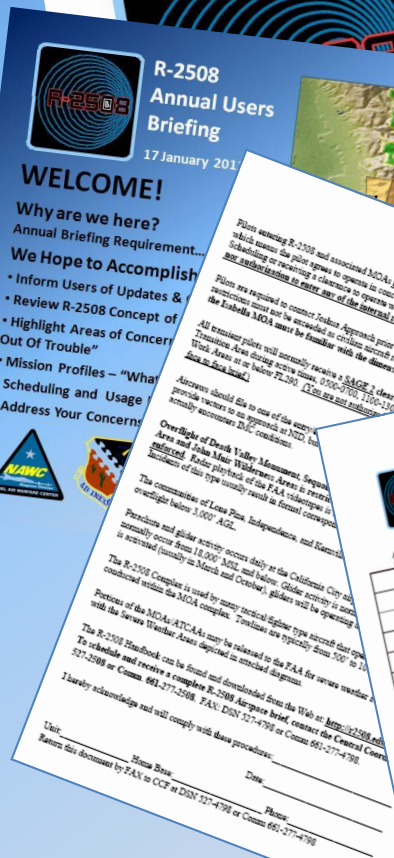
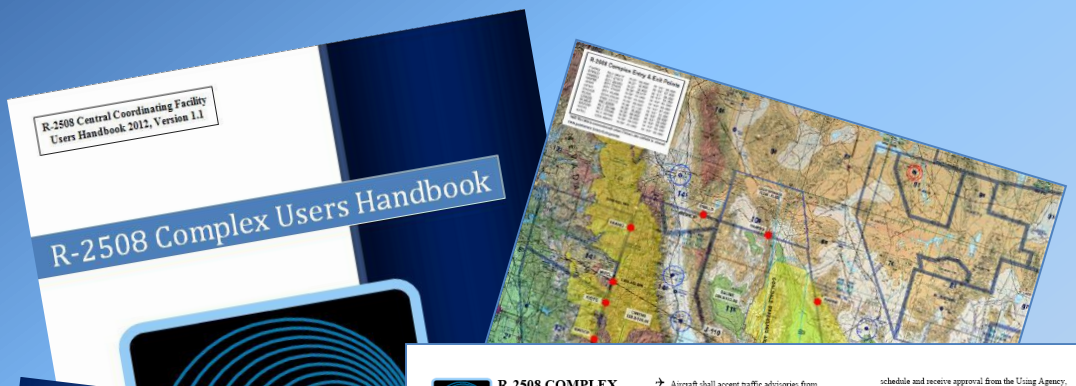


R-2508 Annual Users Briefing

What's Available Online...

- Users Handbook
- This Briefing
- Airspace Request Form
- Situation Report (SITREP)
- Pilot Guide & Map
- NID Transient Pilot Brief
- Where?

<http://www.edwards.af.mil/About/R-2508>



R-2508 PILOT GUIDE
January 5, 2010

R-2508 Complex Airspace Management Office Central Coordinating Facility (CCF)
100 E. Sports Drive, Edwards AFB, CA 93524
Comm: (661) 277-2508, DSN: 527-2508, Fax: 4798

R-2508 Complex User's Handbook View and download at: <http://www.edwards.af.mil/r-2508.asp>

ANNUAL BRIEFING REQUIREMENT:
All units must complete a face-to-face R-2508 Complex procedure brief from CCF, or their Sponsorship Command, prior to flying in R-2508 Complex airspace.

SCHEDULING:
All activities must be scheduled. Enter the Complex -30 min to +1 hr of scheduled time.

- Schedule with CCF by 1700(L) one working day prior to the date of intended use.
- Schedule ALL weekend/holiday events: 24/7 1700 (L) the last working day prior.
- Changes to previously scheduled events: shall be coordinated with CCF 900-1800 local, daily. After hours call: 1-866-805-2811.

DD Form 175, Military Flight Plan:
File two IFR legs: one to enter, and one to exit the Complex. File R-2508 at the destination or departure point. DO NOT file a delay in R-2508.

CONCEPT OF OPERATION:

- Aircraft shall accept traffic advisories from JOSHUA Approach, China Control, or SP0RT unless previously coordinated.
- Work Area Frequencies:
ISABELLA 352.6 / 124.05
OWENS 322.3 / 126.66
SALINE 266.8 / 123.95
PANAMINT 291.6 / 120.15
- Control Facility Frequencies:
JOSHUA 348.7 / 138.66
SP0RT 343.7 / 132.75
China Control 301.0 / 128.25
Bicycle Lake 319.26 / 126.2
- Low-level Procedures: Extended flight activities below 1,500 feet AGL in the Complex SHALL use 315.0 MHz to the maximum extent possible. This frequency is NOT monitored by ATC; calls are pilot to pilot only. Call entry, exit, and procedure points enroute.

COMPLEX CLEARANCES:
All participating aircraft must contact Joshua Approach, to obtain a clearance, prior to operating in the Complex.

- **SAGE 2:** Isabella, Owens, Saline, and Panamint, FL290 and below.
- **PANCHO 2:** Isabella & Panamint FL400 and below; Owens & Saline FL250 and below.
- **EDWARDS Island A.C. Only:** Also Brantley West FL400 and below, Brantley East FL250 and below.

OVERFLIGHT RESTRICTIONS:

- Overflight of Death Valley Mountain, Sequoia Kings Canyon National Parks, Doves Land and John Muir Wilderness Areas is restricted to 3,000' AGL, & J-802, Isabella, Saline, & Panamint.
- Overflight of communities is restricted to 3,000' AGL unless operating on an approved test plan, charted support by 2,000' AGL or JNM, Mojave Airport Class D airspace (2,000' MSL).

COMPLEX ACTIVITIES:

- Refueling areas are NOT protected airspace. Non-participants avoid by EAM and 2,000ft.
- Initial New ACMI and low-level training in the Owens, Saline, and northern Panamint work areas.
- Units participating in R-2508 exercises may exit north of the restricted area, Panamint for TP to TOT run, and may not be in contact frequency.
- "Light-Of" operations are allowed in R-2508, R-2524, or R-2525/26 or as specified in the complex user's handbook.

Measures (ECHO) must be pre-authorized in the R-2515 High-Low conditions. Schedule with EDV 9, Comm (661) 277-3940.

Units in the Mojave, California City, Airport areas; generally 12,000' up at Cal City, 17,500' MSL, and the southern Sonora FL180 and the Camp (200-240ft).

R-2508 COMPLEX AIRSPACE REQUEST

DATE OF MISSION: _____ SQUADRON: _____

PHONE #: _____

FAX #: _____

TYPE MISSION: _____

ACRAFT CALLSIGN	NUMBER & TYPE	BY:AC	REQD DELAY (R-2508)	REQD ALTITUDE	DEPT AIRPORT	ARRIVAL AIRPORT	AIRESPT REQUESTED	TYPE MISSION	REMARKS

CCF USE ONLY
CCF APPROVAL/ENDORSEMENT OF REQUEST
BY: _____ DATE: _____
FOR INFORMATION:
DATE: _____

Send this document by FAX to CCF at DSN 527-4798 or COMM 661-277-4798

Place: _____ Date: _____

Email: 2508C.F@edwards.af.mil
Fax To CCF @ DSN 527-4798 or COMM: (661) 277-4798





R-2508 Annual Users Brief

R-2508 Central Coordinating Facility



Questions?

- Co-Located with Joshua Approach
- Here to Support your Operations
 - DSN 527-2508 or Commercial 661-277-2508
 - 2508ccf@us.af.mil
 - Online Information
 - <http://www.edwards.af.mil/About/R-2508>
 - <https://usaf.dps.mil/teams/12162/SitePages/Home.aspx>

